

Consona N6

Diagnostic Ultrasound System

Concrete to Resonate





The Consona features new and concrete solutions, that efficiently help you to carry out smooth diagnoses for extensive types of patients.

No matter your routine is in hospitals, clinics, or you are honing skills, you will find highly powerful and tools available on this series to keep you stay ahead.

Confident

Excellent Image Platform

The ZST+ platform is an extraordinary innovation, representing an ultrasound evolution. Transforming ultrasound metrics from conventional beam-forming to channel data based processing. It delivers exceptional image quality for infinite imaging solutions with non-stop improvements.



Transducer Family

- Wide clinical application coverage, supports more clinical scenarios
- ComboWave transducers enhance imaging sensitivity



Outstanding Technologies

PSH

iClear

NTE

iBeam

HD-Scope

Glazing flow

HR Flow

UWN+ Contrast Imaging

Image Gallery

Normal Pancreas

Vertebral Artery CDI

Hepatic Vein CDI

Renal PW

Fetal Spine 2D

Uterus

Convenient

Comprehensive Clinical Solution

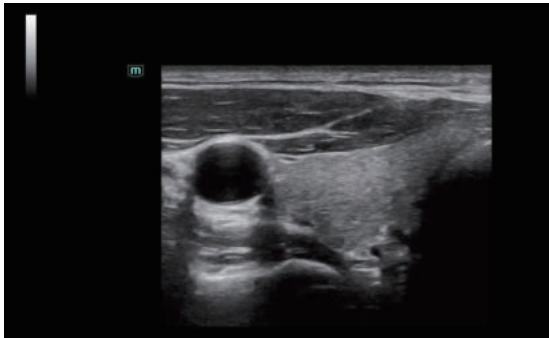
Dedicated to deliver more substantial value in each specific application scenario

General Imaging Solution

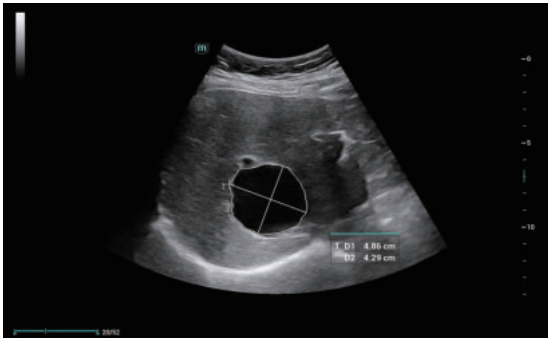
Smart tools for smooth diagnosis

Women Health Solution

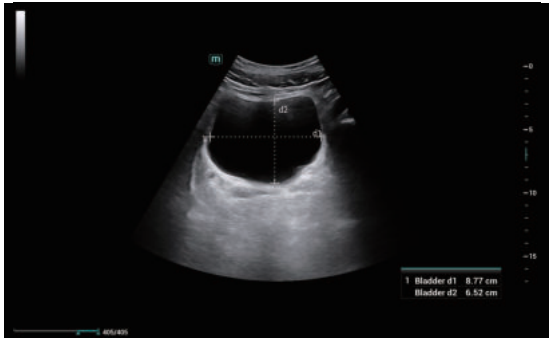
More care for efficiency and satisfaction



iTouch⁺
Real-time dynamic image optimization



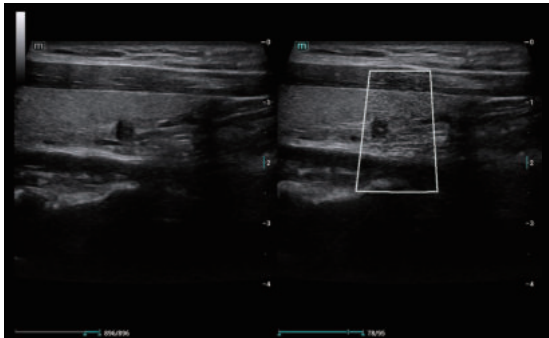
Smart Calc
Automatic trace, measurement and calculation tool



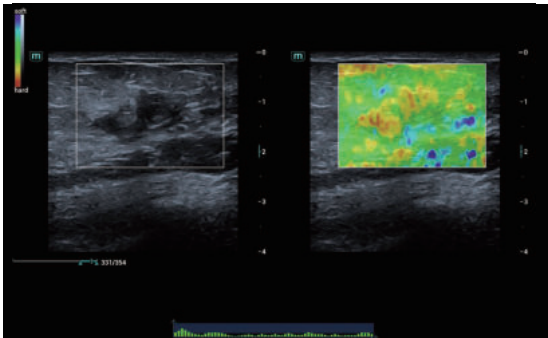
Smart Bladder
Automatic bladder volume measurement



Smart HRI
Automatic HRI index calculation for hepatic steatosis evaluation



HD Scope
Improving the resolution in ROI for easier assessment



NTE
ROI stiffness display with 'Shell' quantitative assessment



Smart Face
Automatic removal of occlusions over fetal face with one click



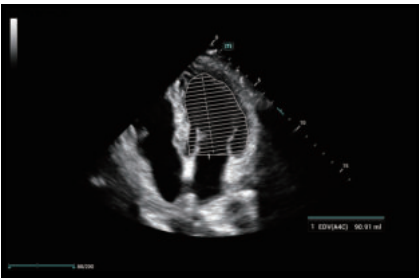
Smart OB
Automatic measurement of fetal biometrics



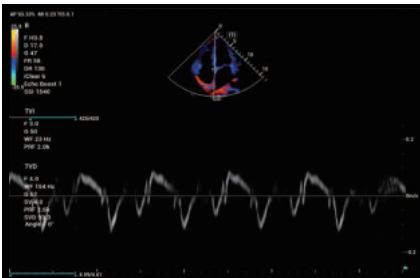
Glazing Flow
Improving the 3D presentation of fetal flow

Cardiovascular Solution

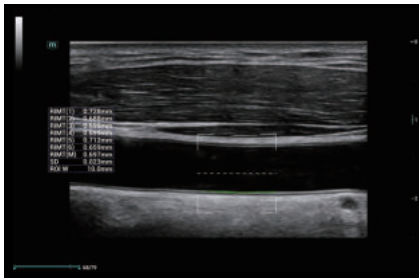
Effective cardiovascular evaluation



AutoEF
Automatic measurement of Ejection Fraction by diastole/systole frames



TDI
Based on Doppler theory, displays the myocardial movement



RIMT
RF-data based real-time IMT measurement

Ergonomic Design

Boosts the daily work efficiency. Exquisite machine design brings users better operating experience



13.3 inch full HD touch screen



Rotatable control panel



Noise reduced design



Water and dust proof panel



Ease-of-transportation



monitor view-angle adjustable



Storage space



Adjustable height



Built-in battery

Conductive

Inspires the growth by every progressive step

Shortened learning curve with effective professional improvement

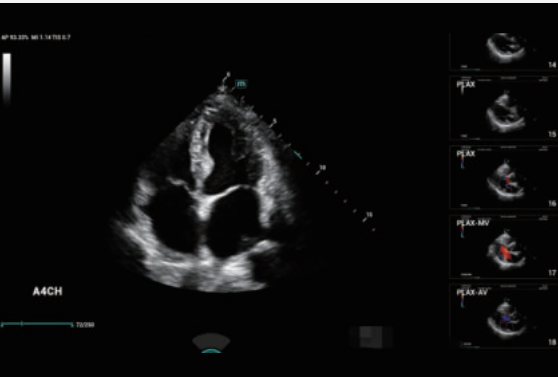
iScanHelper

A scanning tool to practice skills by following the guidance step by step



iWorks

A standardized protocol, scanning step by step without plane omission



Smart Vue

Automatic recognition on standard plane, and restore the standard plane automatically

